

oakheart

£250,000

Plot 15, Waterloo Chambers, Chelmsford

Plot 15 at Waterloo Chambers is a beautifully designed one-bedroom apartment, set within a premium development in the heart of Chelmsford. The property features a modern open-plan kitchen, living and dining area that maximises natural light and offers a perfect space for both relaxing and entertaining. The kitchen is fitted with high quality Shaker-style units, Bosch appliances, granite work surfaces and LED under-unit lighting, making

it both stylish and practical. The bedroom provides ample space and comfort, while the contemporary bathroom is finished with ceramic wall and floor tiles, a wall-hung sink unit and a wall-hung toilet. Additional touches such as luxury Amtico flooring throughout the living area, modern internal doors, video intercom system, and allocated parking add further appeal. Residents benefit from private gated parking, EV charging points, secure bike storage, and the

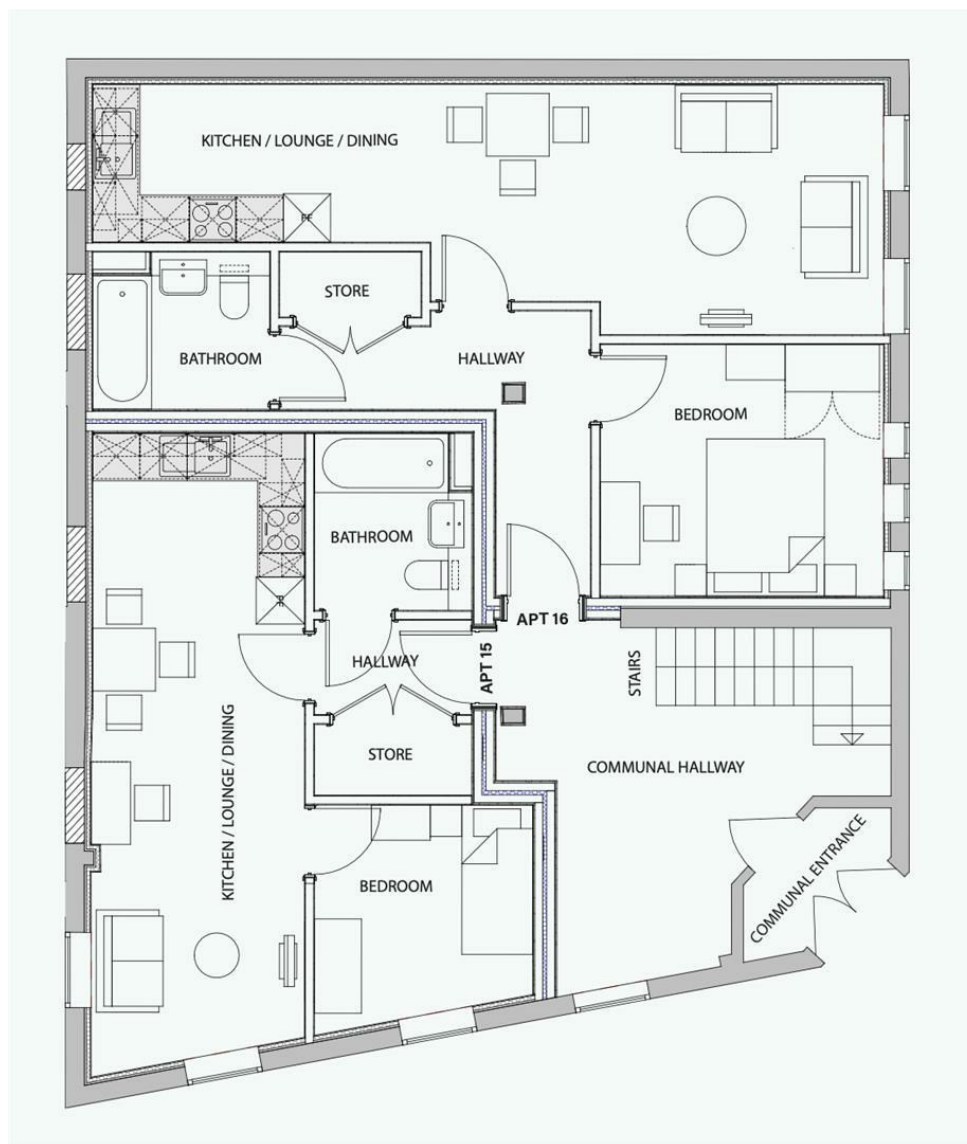
reassurance of a 10-year ICW build warranty, making Plot 15 an outstanding choice for city living in Essex.

Images depict Phase One ground floor apartment.









Local Authority:

Chelmsford

Tenure:

Leasehold

Council Tax Band:

New Build

Energy Efficiency Rating

	Current	Potential
<i>Very energy efficient - lower running costs</i>		
(92 plus) A		
(81-91) B		
(69-80) C		
(55-68) D		
(39-54) E		
(21-38) F		
(1-20) G		
<i>Not energy efficient - higher running costs</i>		
England & Wales	EU Directive 2002/91/EC	

Agents Note: Whilst every care has been taken to prepare these particulars, they are for guidance purposes only. All measurements are approximate and are for general guidance purposes only and whilst every care has been taken to ensure their accuracy, they should not be relied upon.

Oakheart Chelmsford
01245 800181
chelmsford@oakheart.co.uk
20 Victoria Road, Chelmsford, Essex, CM1 1PA

oakheart